

Mining & Groundwater

Shell (Exploration and Production)

Corrib Gas Terminal

2004-2013



Bellanboy, County Mayo, Republic of Ireland



Tailing ponds created to collect all site runoff

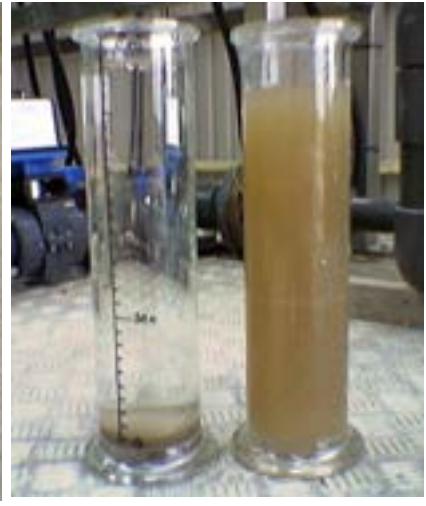
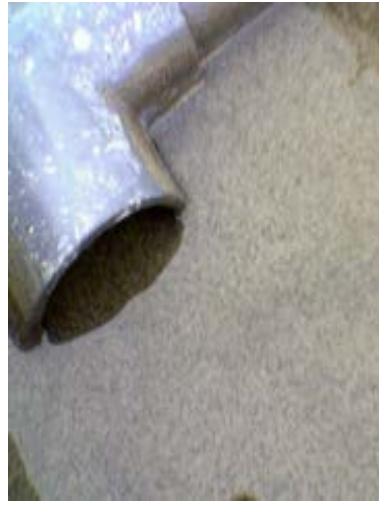
The late Professor Philip Morgan (Inventor of Soneco® and Founder of Power & Water) at Shell Corrib Gas Terminal

Showing colloidal, non-settling characteristics of surface water
Close-up of suspension. Settling period ~6 months





Installation of 4x electrochemical reactors and lamella plate separator



EC Floc formation and Raw & Treated Samples

Phase 2 upgrade and installation of 24x EC Reactors, floc tank and a new radial clarifier



Final water holding tank. Water was tested prior to release to surface drinking water source

